

Capital Asset Advisory Committee
2018 Capital Improvement Program
Financial Status July 31, 2020

August 6, 2020

2018 CAPITAL IMPROVEMENT PROGRAM – FINANCIAL STATUS 7/31/2020

Revenue

\$ (326,490,000)	First Bond Issuance
\$ (50,165,349)	Premium on First Bond Issuance
\$ (11,699,891)	Interest Through June 30
\$ (41,800,962)	Fiscal Years 2020 and 2021 Capital Transfers (COP Principal & Interest Payments Removed)
\$ (430,156,202)	

Expenses

As of July 31, 2020

\$ 158,428,941	Total Expended - All projects
\$ 133,658,648	Total Encumbered - All projects

Charter Projects

\$ 28,784,049	Total Expended - Charter
\$ 7,853,394	Total Encumbered - Charter

As of June 30, 2020

\$ 126,558,504	Total Expended - All projects
\$ 157,681,682	Total Encumbered - All projects

\$ 25,163,874	Total Expended - Charter
\$ 6,319,367	Total Encumbered - Charter

2018 CAPITAL IMPROVEMENT PROGRAM – FINANCIAL STATUS 7/31/2020

Funding Breakdown 2018 Capital Improvement Program

\$	326,490,000	First Bond Issuance
\$	50,165,349	Premium on First Bond Issuance
\$	11,699,891	Bond Interest Through June 30, 2020
\$	41,800,962	FY 2020 & 2021 Capital Transfers
\$	430,156,202	Funds to Date
\$	240,510,000	Estimated Second Bond Issuance
	TBD*	Premium on Second Bond Issuance
	TBD*	Future Bond Interest Earnings
\$	83,601,924	4 Years Capital Transfer
	TBD*	Interest on Capital Transfer
\$	754,268,126	Preliminary Total

TBD* To Be Determined

2018 CAPITAL IMPROVEMENT PROGRAM – FINANCIAL STATUS 7/31/2020

Additions, New Buildings & In Design to Bid Late Summer / Fall

Additions

Bell MS Addition - Bid Date July 30, 2020

Foster ES Addition – Bid Date October 2020

Wayne Carle MS Addition – Bid Date September 10, 2020

Manning K8 Addition - Bid Date August 13, 2020

Parmalee ES Addition - Bid Date September 3, 2020

New Building

CTE South - Bid Date August 20, 2020

In Design

Pomona High School Addition/Renovation

Jefferson High School Addition/Renovation – GMP July 2020

Lumberg Elementary School Addition/Renovation

Fall Design Starts

Marshdale Elementary School Replacement

Prospect Valley Elementary School Replacement

Ralston Valley HS Addition/Renovation

Standley Lake HS Addition/Renovation

2018 CAPITAL IMPROVEMENT PROGRAM – FINANCIAL STATUS 7/31/2020

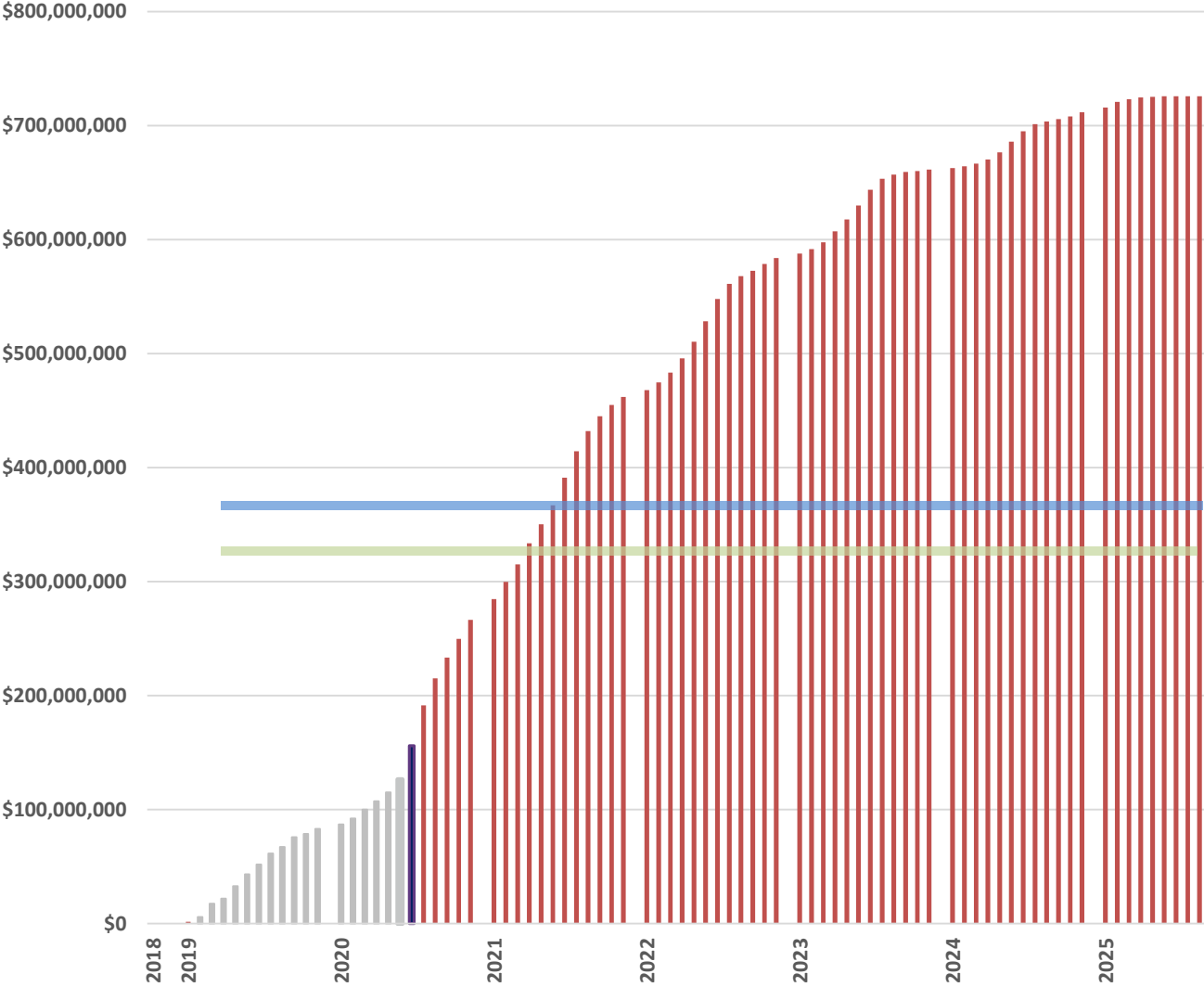
Under Construction:

Arvada HS Addition / Renovation	Complete September 2020
Three Creeks K8 Addition	Complete
Wilmot ES Addition / Renovation	Complete September 2020
Kendrick Lakes ES Replacement	Complete December 2020
Columbine HS Addition / Renovation	Complete July 2021
Green Mountain HS Addition / Renovation	Complete July 2021
Conifer HS Addition / Renovation	Complete July 2021
6 HS Artificial Turf & Tracks	Complete October 2020
Alameda International Jr./Sr. High School	Complete August 2022

Furniture:

- 14 replacements
- Columbine HS Partial Replacement
- Green Mountain HS Partial Replacement

2018 CAPITAL IMPROVEMENT PROGRAM – FINANCIAL STATUS 7/31/2020



CAPITAL IMPROVEMENT PLAN – FINANCIAL STATUS 7/31/2020

Impact of COVID-19 Virus

Covid-19 has had a minimal impact on most projects. There have been delays to some playground equipment and HVAC equipment.

There doesn't appear to be shortages of labor or materials, for the most part, projects in design or under construction are continuing normally.



CAAC Construction Update

8-6-2020



2020 - PROJECTS

58 of 88	Elementary Schools
11 of 15	High Schools
6 of 17	Middle Schools
2 of 2	7-12 Schools
2 of 6	K-8 Schools
7 of 18	Option Schools
1 of 4	Athletic Facilities

Alameda HS – Addition WOLD – CMGC Phipps

Construction



Conifer HS – Addition Cannon – CMGC FCI

Construction

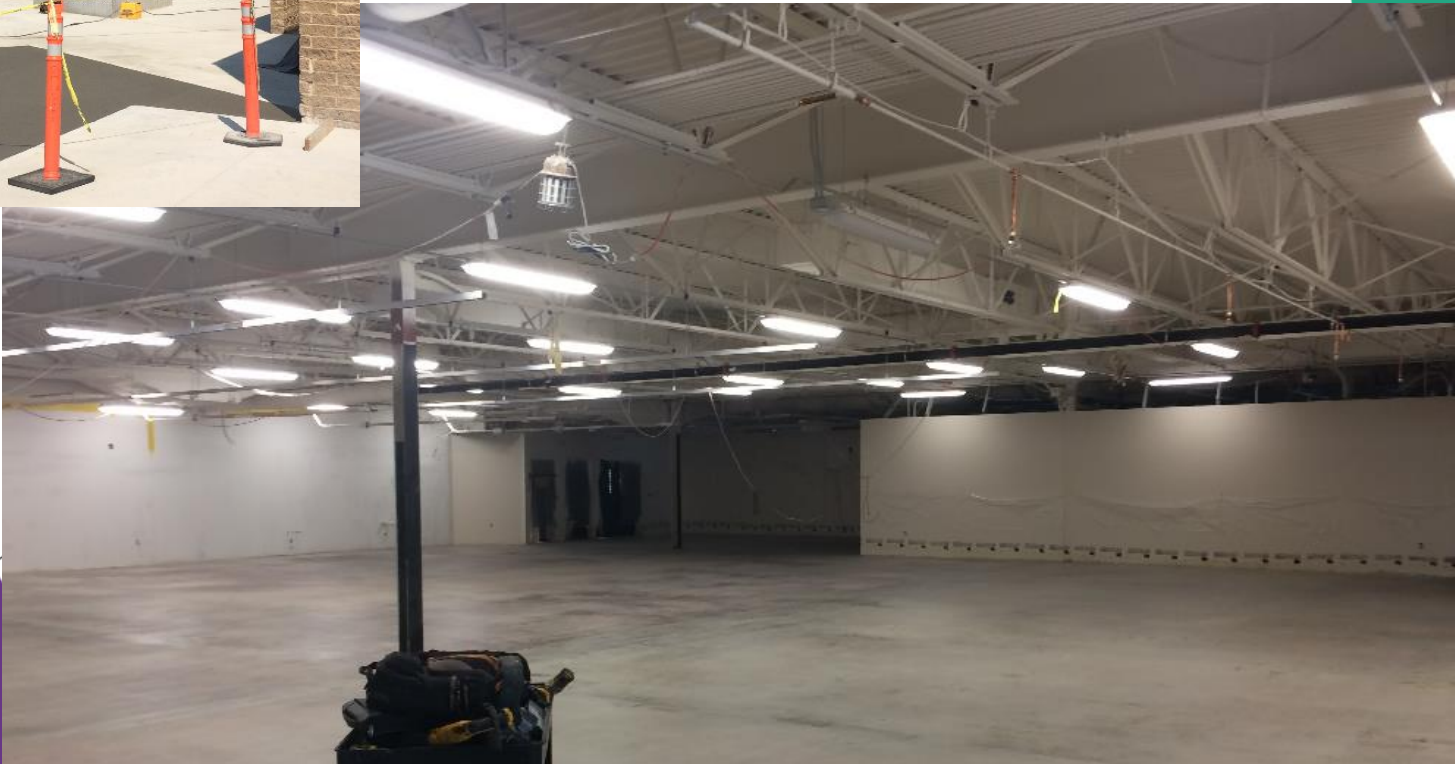


Green Mountain HS – Addition MOA – CMGC GE Johnson



Green Mountain HS – Addition MOA – CMGC GE Johnson

Construction



Columbine HS – Addition EIDOS – CMGC Swinerton



Columbine HS – Addition EIDOS – CMGC Swinerton

Construction



2020 HS Field Improvements

Columbine HS

HCM – CMGC ECI

Punch List



2020 HS Field Improvements Pomona HS HCM – CMGC ECI

Construction
8-29-20



2020 HS Field Improvements Standley Lake HS HCM – CMGC ECI

Construction
9-10-20



2020 HS Field Improvements A WEST HCM – CMGC ECI

Construction
9-17-20



2020 HS Field Improvements Green Mountain HS HCM – CMGC ECI

Construction
9-29-20



2020 HS Field Improvements Golden HS HCM – CMGC ECI

Construction
10-7-20



Arvada HS - Addition HCM – CMGC Saunders

Construction



Arvada HS - Addition HCM – CMGC Saunders



Arvada HS - Addition HCM – CMGC Saunders

Construction



Complete

District Wide LED Site Lighting Ackerman – Piper Electric



Welchester ES



Foothills ES



Eiber ES



Ralston ES

Security Glass Installation 14 - Elementary Schools

Kyffin ES
Complete

Mitchell ES
Complete

Stevens ES
Complete

Thomson ES
85%

Peck ES
Complete

Warder ES
Complete

Secrest ES
Complete

Wilmore Davis
Complete

Grn Mtn ES
Complete

Elk Creek ES
Complete

Shelton ES
Complete

Edgewater ES
Finish 8/24

Slater ES
Complete

Shaffer ES
Finish 8/24



Security Camera Installations Scheduled to Complete Feb 2021



West Jefferson MS – Upgrades Cannon – CMGC FCI

Construction



Three Creeks K8 – Addition HCM – CMGC Phipps



Wilmot ES – Addition DLR – CMGC Himmelman



DW LED - 18 Schools

Ackerman – CMGC Weifield

Punch List



Westridge ES



Ryan ES

1. Columbine Hills ES
2. Deane ES
3. **Devinny ES**
4. Dennison ES
5. Fitzmorris ES
6. Kullerstrand ES
7. Lasley ES
8. Maple Grove ES
9. Patterson International
10. **Peck ES (awaiting accent fixture)**
1. **Powderhorn ES**
2. **Ryan ES**
3. Secrest ES
4. **Sheridan Green ES**
5. **Stott ES**
6. Vanderhoof ES
7. Westgate ES
8. **Westridge ES**

Construction

Dec. 2020
Completion

Kendrick Lakes ES – Replacement Larson Incitti – GC Roche



DW Roofing I – Green Mtn, Lasley WJE – CMC & United Materials

Green Mountain ES



Construction

Green Mtn ES
95%

Lasley ES
90%

Lasley ES



Complete

Chiller Replacement – Golden HS Columbine – K&M



Punch List

DW Roofing I - Patterson ES, Parr ES
WJE -United Materials, Flynn



DW Mechanical – Patterson ES Columbine - Braconier

Construction



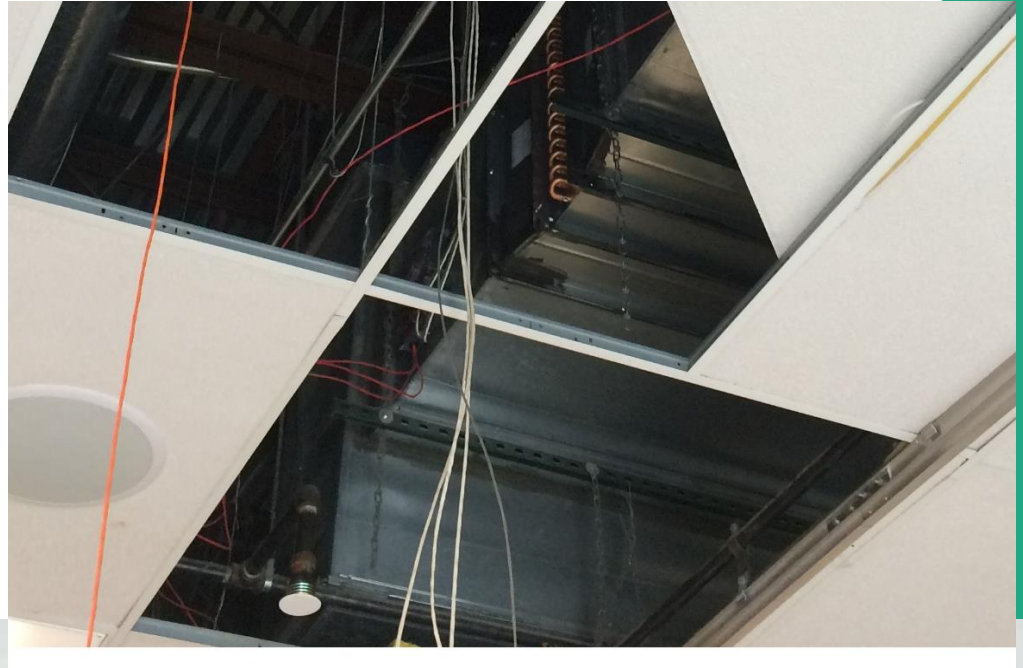
DW Mechanical – Stott ES RTU, Columbine - Braconier

Construction



DW Mechanical – Ryan ES RTU Columbine - Braconier

Construction



DW Roofing II – Evergreen HS Rooftech –Powers

Punch List



DW Roofing II – Kullerstrand ES

Rooftech – Grabau

Punch List



DW Roofing II – Carmody MS Rooftech - B&M



DW Roofing II – Little ES, Swanson ES Thompson ES Rooftech - CMC (LES & SES) B&M (TES)

Punch List



Trailblazer Locker Room & Press Box Mellin & Assoc. – WE O’Neal

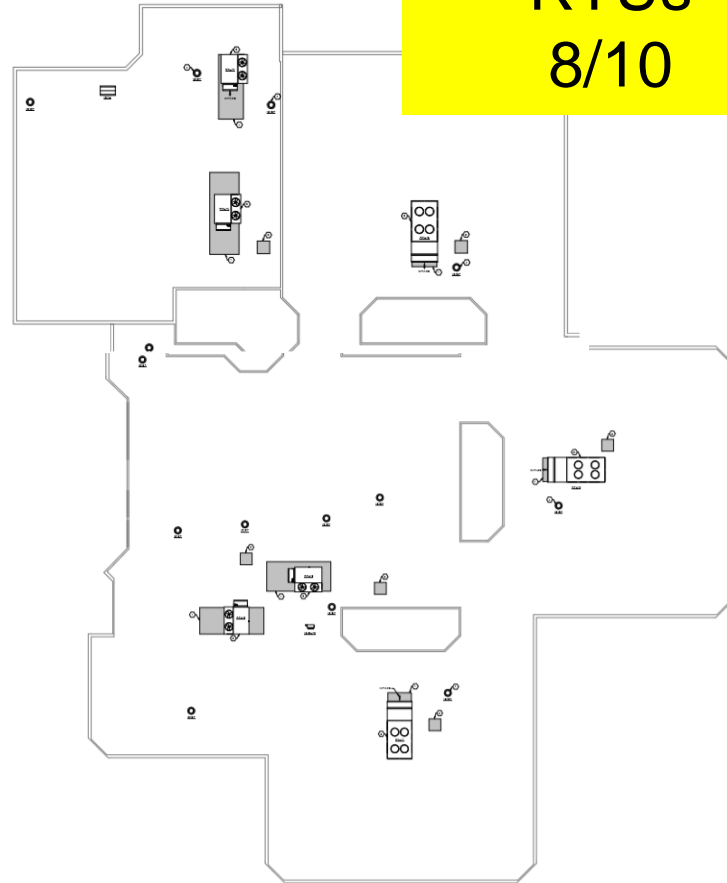
Construction
Complete
9/8



AHU Replacement - Westridge ES Branch Pattern - JCOR

Construction

Start Up
RTUs
8/10



DW Playgrounds Group 1

Allendale ES , Stott ES , Vanderhoof ES

Design Concepts – Richdale,

Construction
Install 9/10



Stott ES



Vanderhoof ES



Allendale ES

DW Playgrounds Group 2

Kendallvue ES, Stony Creek ES, Westridge ES

Design Concepts –T2

Construction



Stony Creek,



Westridge ES



Kendallvue ES

DW Playgrounds Group 3 - Fletcher Miller Design Concepts –Goodland

Construction



DW Playground Group 3 - Sheridan Green Design Concepts –Goodland

Construction



Eiber ES AMD - Himmelman

Construction



Belmar ES AMD – Palace Construction

Construction



DW Paving I –

Columbine Hills ES
Lawrence ES

Complete

Dadey –

Straightline

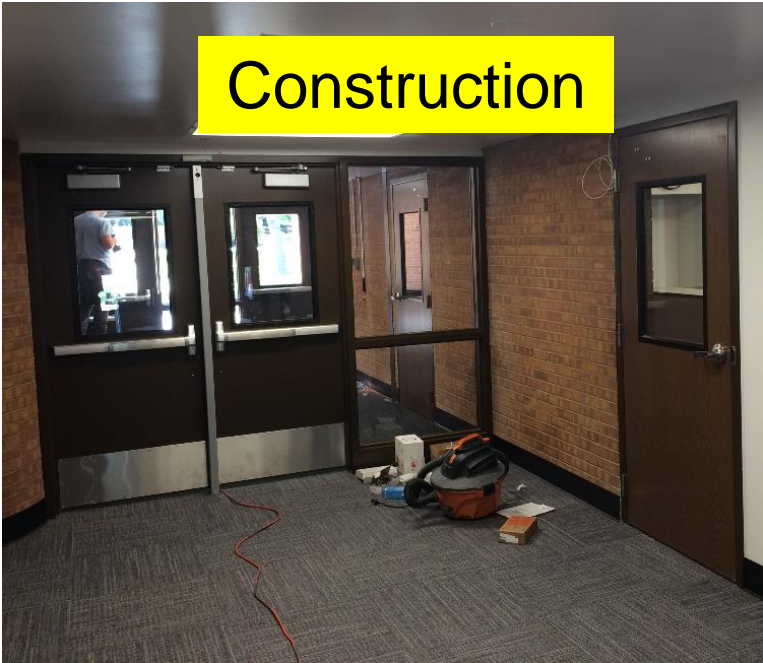


Lawrence ES



Columbine Hills ES

Green Gables ES Upgrades Sybazz – Himmelman



Hutchinson ES Upgrades Sybazz – Himmelman



Ken Caryl – Signage & FACS Room Upgrades HCM – Single Track

Construction



Dutch Creek ES – Upgrades Cunningham Group – HPM

Construction



Adams ES – Upgrades RB+B – Palace Construction

Construction
RTU 8/6
Glass



Lukas ES – Upgrades RB+B – Palace Construction

Construction
RTU 8/14
Glass



Semper ES - Upgrades

RB+B – Palace Construction

Construction
Glass



Witt ES – Upgrades RB+B – Palace Construction



Construction Glass



DW Paving II – Bradford Int, Ryan ES, Mitchell ES, Shelton ES

JVA – Martin Marietta Materials

Punch List



Bradford Int



Ryan ES



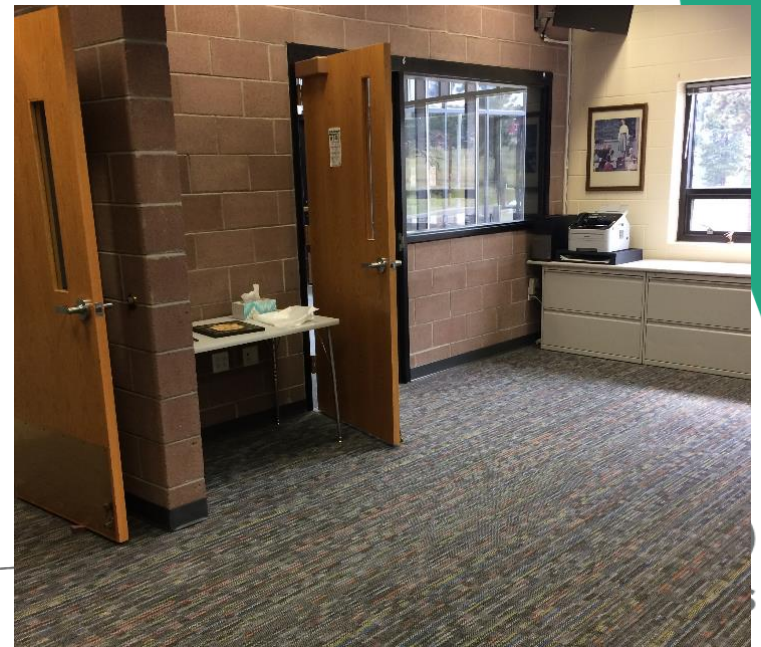
Mitchell ES



Shelton ES

Ralston ES, Upgrades CRP – Bryan

Construction



Foothills ES ES Upgrades CRP – HPM

Construction
Glass



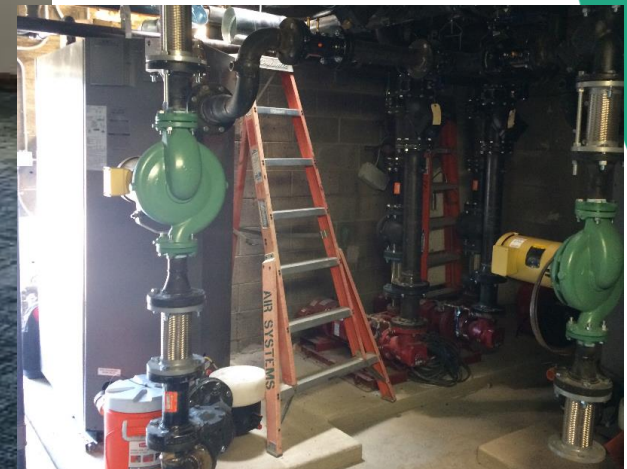
Vivian ES Upgrades CRP – HPM

Construction Playground RTU



Welchester ES Upgrades CRP – Bryan

Construction



DW Flooring I - Fletcher Miller, Lasley ES, Free Horizon & Fitzmorris ES Farnsworth Group – HPM Contracting



Fitzmorris ES



Lasley ES



Fletcher Miller



Free Horizon

Hackberry Hill ES Upgrades

RTA – GH Phipps



Arvada K8, Upgrades RTA – GH Phipps

Construction

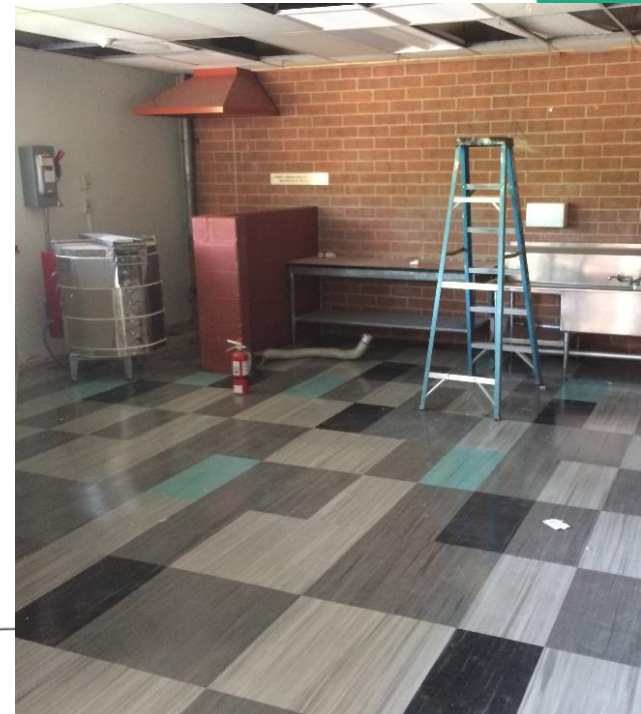
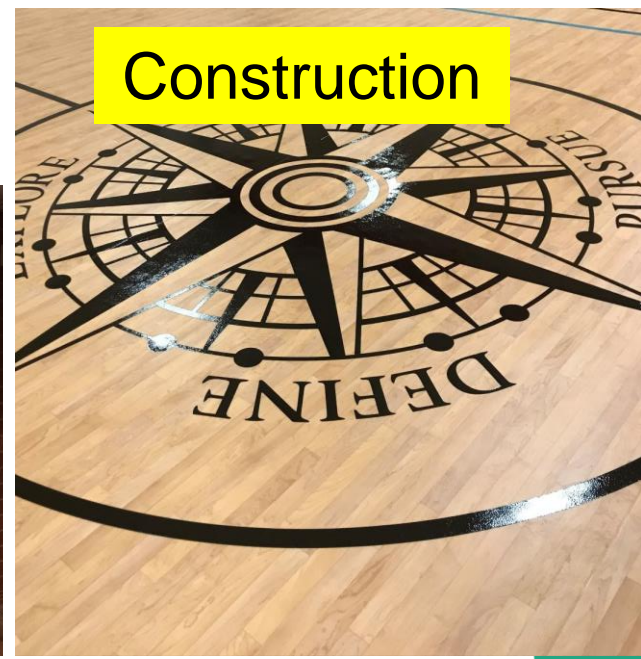


Fremont ES – Upgrades Jordin – P.G. Arnold

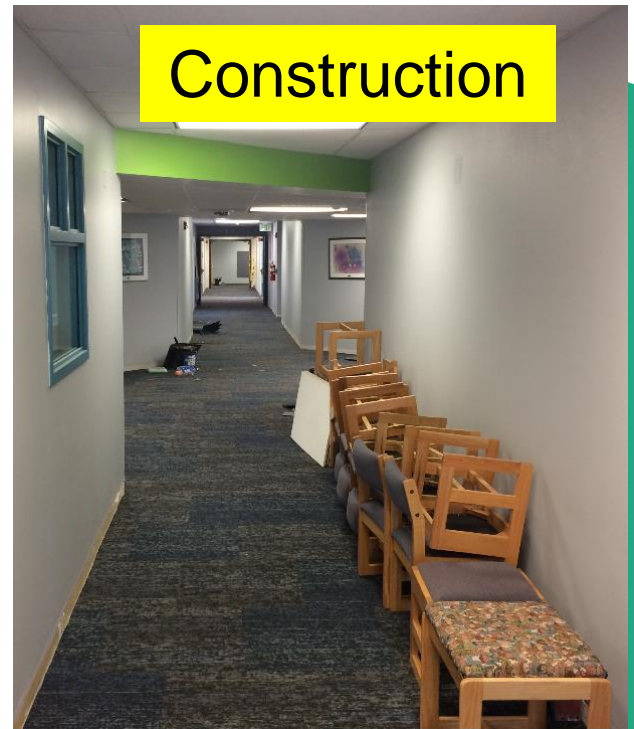
Construction



Coronado ES Upgrades OZ – W.E. O'Neil



Columbine Hills ES Upgrades OZ – W.E. O’Neil



Stober ES Upgrades LOA – Golden Triangle

Construction
Elevator - Oct



Punch List

DW Flooring II - Allendale ES,
Thomson ES, West Woods ES gym
Fairmount ES gym

EUA – Colorado Floorworks (FES) – Gary Leimer



Allendale ES



Thomson ES



Fairmount ES

Bid / GMP

New Construction & Additions

- START Construction SUMMER / FALL 2020

Bell MS – 1 Story, 4 Classroom Addition Eidos – Golden Triangle (all alternates)

Construction
Bid

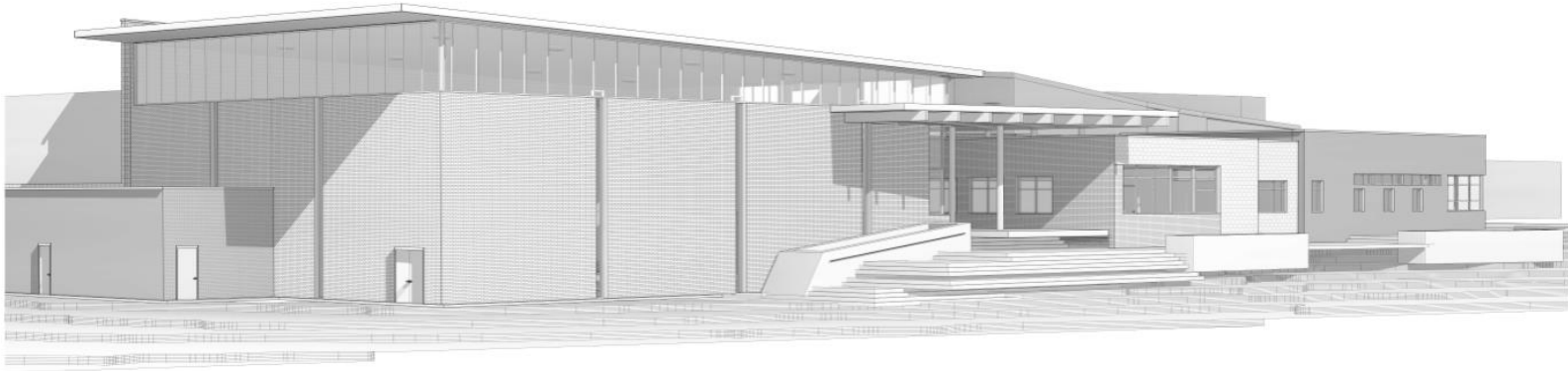
\$5,512,272

\$357,772
below budget



Jefferson HS – Aux Gym Addition MOA – Haselden

Construction
GMP
\$9,694,552



Manning Opt – 1 Story –
7 Classroom Addition
AMD – Contractor TBD

Bidding 8/13

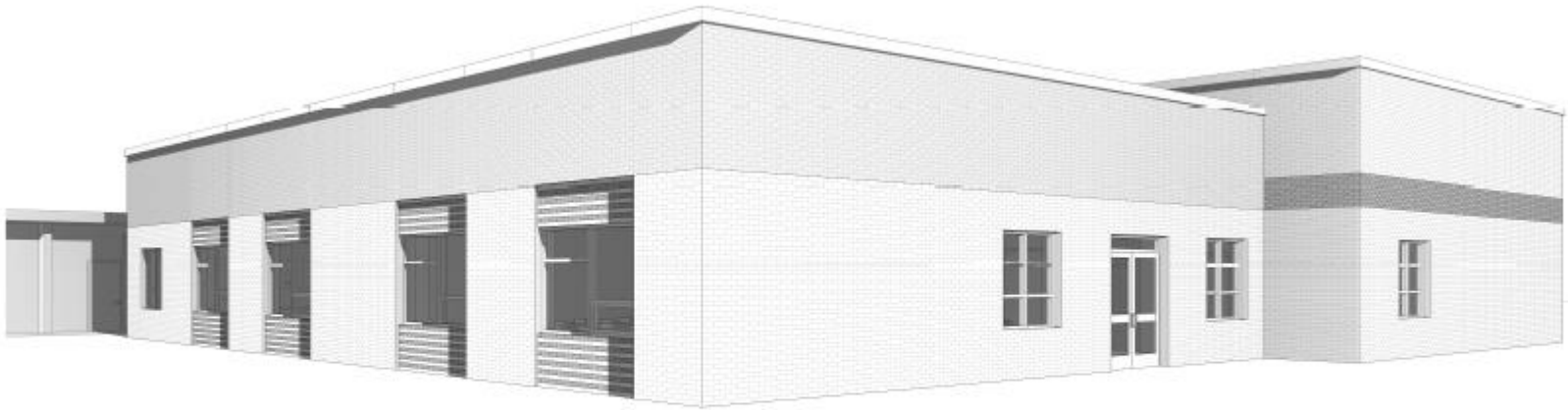


CTE South – New Building HCM – Contractor TBD



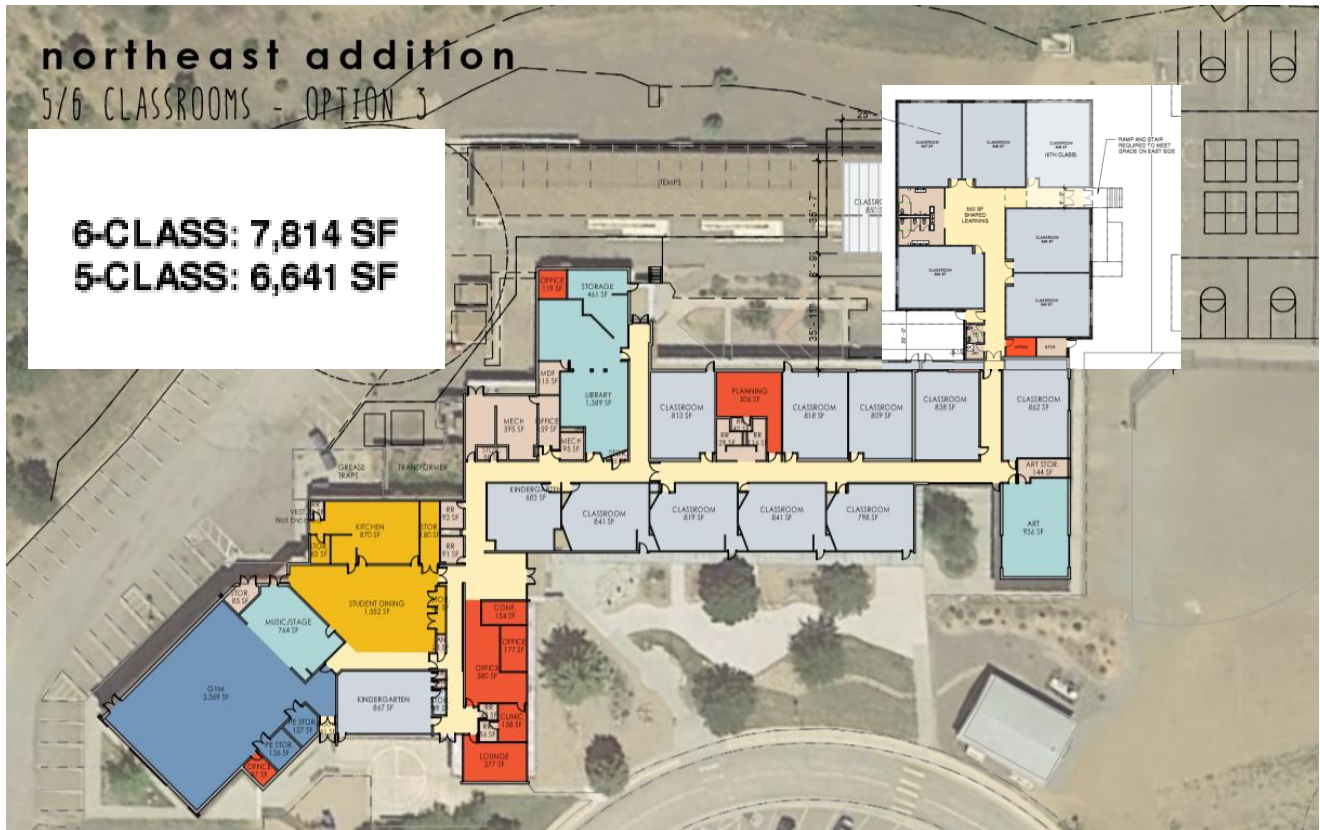
Lumberg ES – 4 CR Addition MOA – CMGC Haselden

GMP
Negotiations



Parmalee ES – 1 Story – 5/6 Classroom Addition OZ – Contractor TBD

Bidding 9/3



Wayne Carle – 2 Story – 8 Classroom Addition RB+B – Contractor TBD

Bidding 9/10



Foster ES – 1 Story – 7 Classroom Addition Larson Incitti – Contractor TBD

Bidding 10/15



Furniture

- Arvada HS
- Arvada K8
- Arvada West
- Bear Creek K8
- Belmar
- Columbine Hills
- Columbine HS
- Conifer HS
- Coronado ES
- Creighton MS
- Drake MS
- Dutch Creek
- Eiber ES
- Fairmount ES
- Foothills ES
- Free Horizon
- GMHS
- Green Gables ES
- Hutchinson ES
- Ken Caryl MS
- Kendallvue
- Kullerstrand ES
- Kyffin ES
- Leawood ES
- Lukas ES
- Maple Grove
- McLain HS
- Molholm ES
- Moore MS
- Normandy ES
- North Arvada MS
- Ralston ES
- Ralston Valley HS
- Rooney Ranch ES
- Ryan ES
- Stober ES
- Summit Ridge MS
- Three Creeks K8
- Ute Meadows ES
- West Jeff MS
- Welchester ES
- Westgate ES
- Wilmot ES
- Witt ES

2021 Projects (On Deck)

- DW Elevator
- DW Flooring
- DW LED
- DW Mechanical
- DW Paving
- DW Playgrounds
- DW Roofing
- DW Athletic Turf
- Allendale ES
- Carmody MS
- Chatfield HS
- Dakota Ridge HS
- Deane ES
- Dennison ES
- Devinny ES
- Evergreen MS
- Evergreen HS
- Everitt MS
- Fitzmorris ES
- Kullerstrand ES
- Lasley ES
- Lawrence ES
- Maple Grove ES
- Marshdale ES
- Miller Special OPT
- Patterson ES
- Pomona HS
- Powderhorn ES
- Prospect Valley ES
- Ralston Valley HS
- Ryan ES
- Sheridan Green ES
- Standley Lake HS
- Stott ES
- Vanderhoof ES
- Westridge ES

Pomona HS – Aux Gym Addition Sybazz – Saunders

Schematic Design



Next Meeting 9/3/20

2018 BOND PROGRAM COMMUNICATIONS UPDATE

CAPITAL ASSET ADVISORY COMMITTEE

AUGUST 2020

COMPLETED WORK:

- Created short site visit vignette videos to show progress of construction projects:
 - Sharing videos on social media - [Columbine Construction Video](#)
- Continued production of bond signs
- Worked with Denver 7 on [Bond Construction Update story](#)
- Sharing summer construction updates on Jeffco social media channels to keep the community informed of summer progress

Website analytics:

Jeffcobuilds.org and all pages with "jeffco builds" in the URL (ie sub-pages)

Jeffco Builds page performance	Page views	Unique page views
June 2020	1,860	766
July 2020	2,524	2,147
% change	36% increase	180% increase

UPCOMING WORK:

- Planning Warren Tech South news story and pitch:
 - Announcing program names
 - Sharing updated renderings
 - Interviews with teachers and principal who will be at Warren Tech South
- Planning site tours of current construction projects for more short vignette videos
- Continued social media coverage of completed projects
- Pitching stories to press to tour completed projects

10,158 People Reached | 2,596 Engagements | Boost Post

30 Comments 5 Shares

7,817 People Reached | 767 Engagements | Boost Post

You and 49 others | 4 Comments

Like | Comment | Share